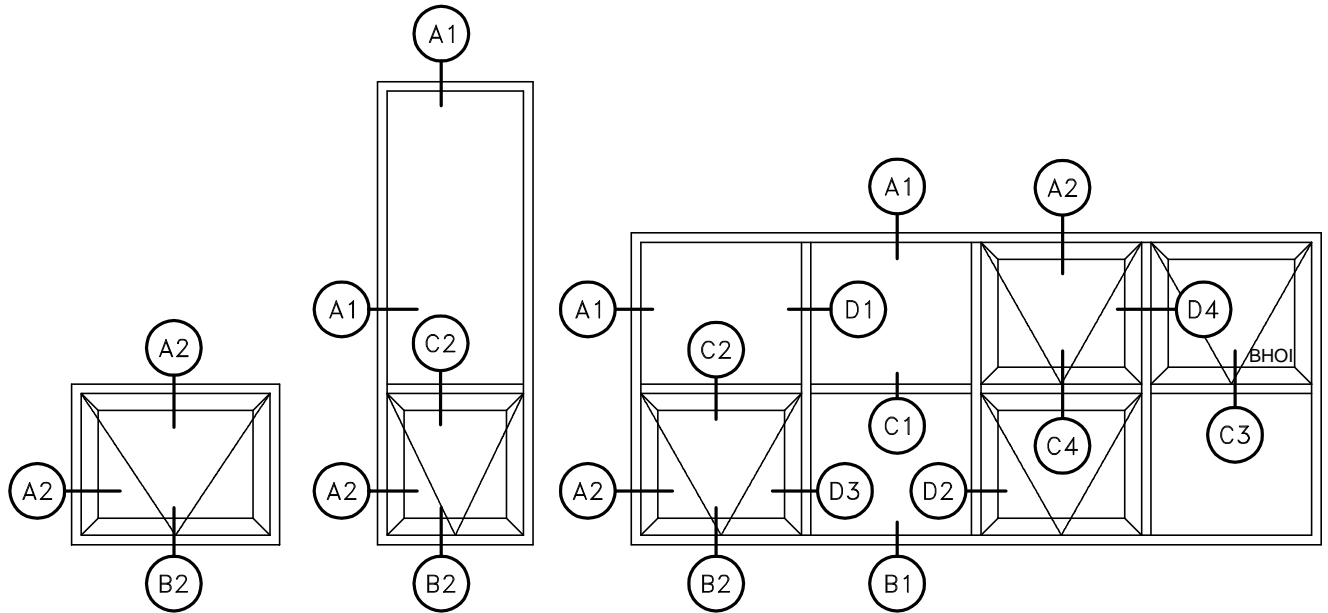


FIXED INSULATED WINDOW AND
OPENING IN 1700 SERIES (57mm)..... PAGE 2

- DETAILS FOR HEAD AND SILL PAGE 3
- DETAILS FOR HORIZONTAL MULLION PAGE 3
- DETAILS FOR VERTICAL MULLIONS PAGE 4

FIXED INSULATED WINDOW AND
OPENING IN 1740 SERIES (102mm)..... PAGE 5

- DETAILS FOR HEAD AND SILL PAGE 6
- DETAILS FOR HORIZONTAL MULLIONS PAGE 6-7
- DETAILS FOR VERTICAL MULLIONS PAGE 8



DETAILS FOR BOTTOM HUNG OPENING
IN VENTS (BHOI) ALSO APPLY TO
CASEMENTS VENTS OPENING IN (SHOI).

LEGENDE

- BHOI: BOTTOM HUNG OPENING IN.
- SHOI: SIDE HUNG OPENING IN.
- : FILE NAME FOR AUTOCAD

GENERAL NOTE

- DETAILS ARE SUBJECT TO CHANGE WITHOUT NOTICE.
- DIMENSIONS WILL NOT SHOW ON THESE FILES.
- PLEASE ADD THEM TO YOUR DRAWING ACCORDINGLY.
- TO OBTAIN THE RAIN SCREEN PRINCIPLE AND BETTER PERFORMANCE, USE SNAP ON BEAD WITH "MAXSEAL" SYSTEM, ON DISK 1700AF.

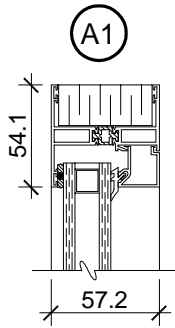
NOTE 1:

BIGGER HORIZONTAL MULLION, 70-229, FOR WIDER MODULES, AVAILABLE ONLY WITHOUT ANY SASH IN THE ABOVE LIGHT.

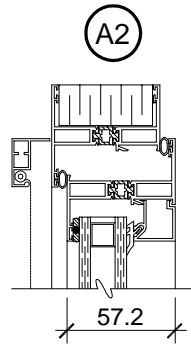
NOTE 2:

VERTICAL MULLIONS 70-226 AND 71-428, WITH SASH ON BOTH SIDES, FOR BHOI ONLY. IF SHOI, POSSIBLE ONLY WHEN NO HINGE IS REQUIRED ON THIS SAME MULLION. ELSE USE FILE 229ViViH OR 429ViViH.

HEAD AND JAMB SECTION

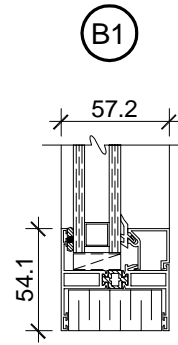


70-225
file 225DT

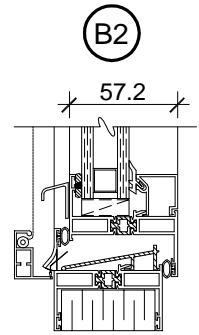


70-225
file 225ViT

SILL SECTION

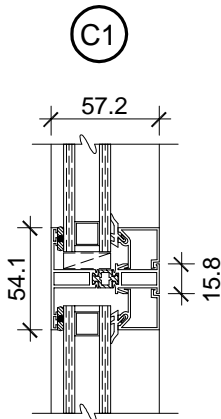


70-225
file 225DB

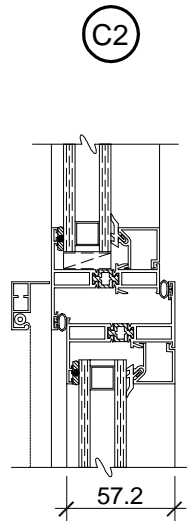


70-225
file 225ViB

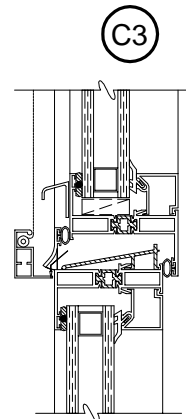
HORIZONTAL MULLION SECTIONS



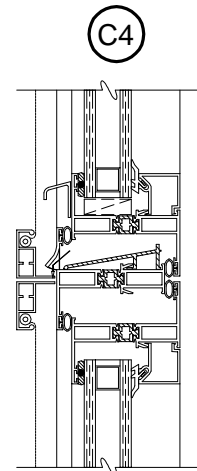
70-226
file 226DD



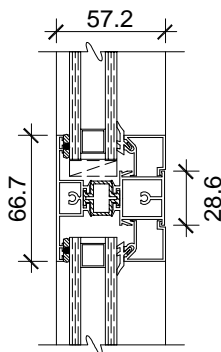
70-226
file 226DVi



70-226
file 226ViD

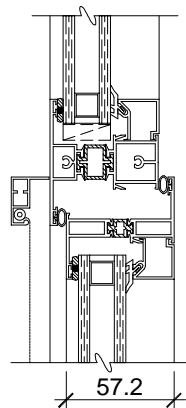


70-226
file 226ViVi



See note 1

70-229
file 229DD

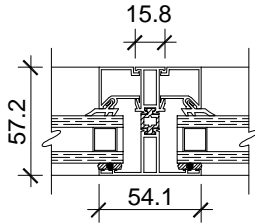


See note 1

70-229
file 229DVi

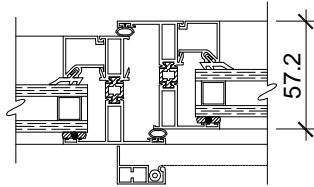
VERTICAL MULLION SECTIONS

D1



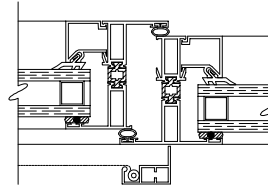
70-226
file 226DDH

D2



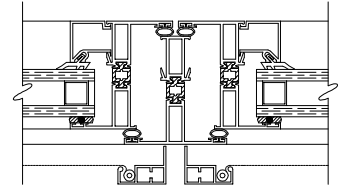
70-226
file 226DViH

D3



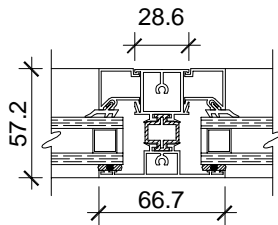
70-226
file 226ViDH

D4

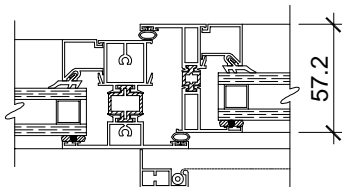


See note 2

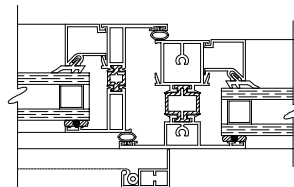
70-226
file 226ViViH



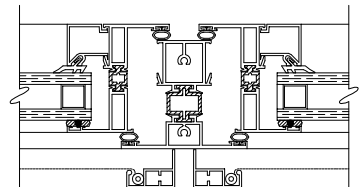
70-229
file 229DDH



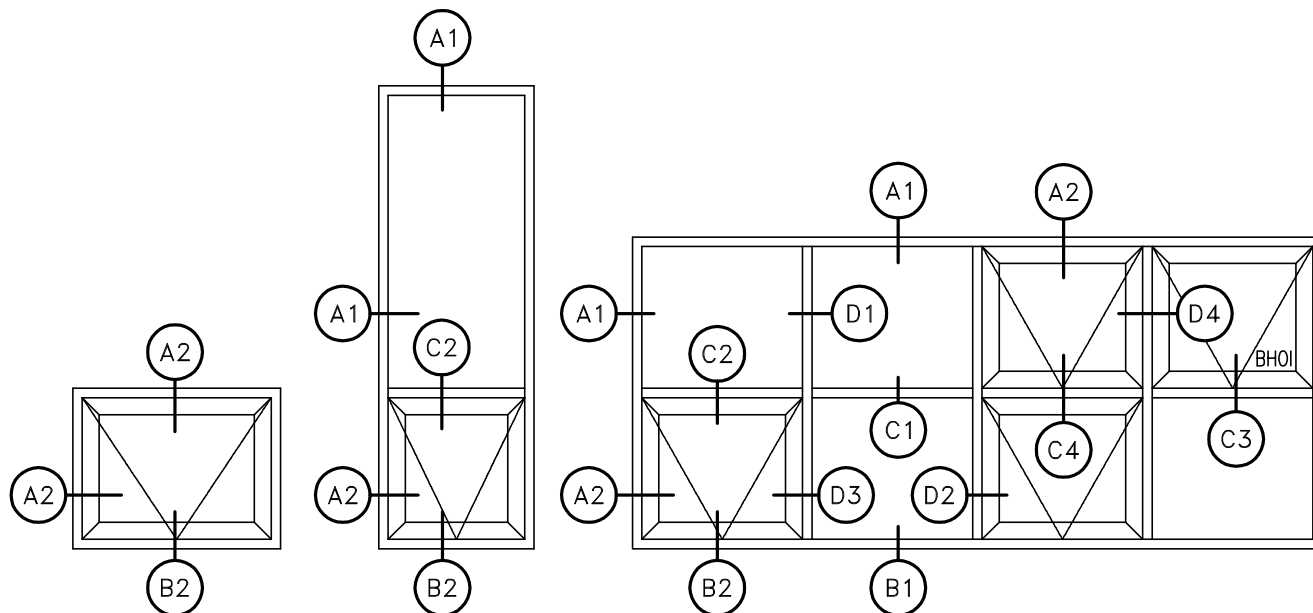
70-229
file 229DViH



70-229
file 229ViDH



70-229
file 229ViViH



DETAILS FOR BOTTOM HUNG OPENING
IN VENTS (BHOI) ALSO APPLY TO
CASEMENTS VENTS OPENING IN (SHOI).

LEGENDE

-BHOI: BOTTOM HUNG OPENING IN.

-SHOI: SIDE HUNG OPENING IN.

 : FILE NAME FOR AUTOCAD

GENERAL NOTE

-DETAILS ARE SUBJECT TO CHANGE WITHOUT NOTICE.

-DIMENSIONS WILL NOT SHOW ON THESE FILES.

PLEASE ADD THEM TO YOUR DRAWING ACCORDINGLY.

-TO OBTAIN THE RAIN SCREEN PRINCIPLE AND BETTER PERFORMANCE, USE SNAP ON BEAD WITH "MAXSEAL" SYSTEM, ON DISK 1700AF.

NOTE 1:

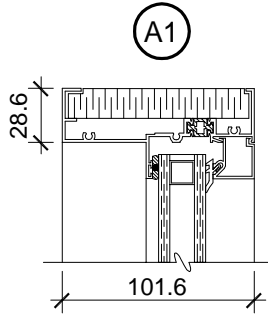
BIGGER HORIZONTAL MULLION, 70-229, FOR WIDER MODULES, AVAILABLE ONLY WITHOUT ANY SASH IN THE ABOVE LIGHT.

NOTE 2:

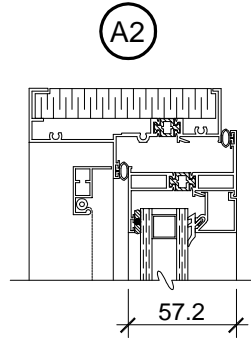
VERTICAL MULLIONS 70-226 AND 71-428, WITH SASH ON BOTH SIDES, FOR BHOI ONLY. IF SHOI, POSSIBLE ONLY WHEN NO HINGE IS REQUIRED ON THIS SAME MULLION. ELSE USE FILE 229ViViH OR 429ViViH.

HEAD AND JAMB SECTION

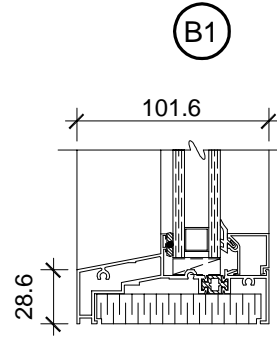
SILL SECTION



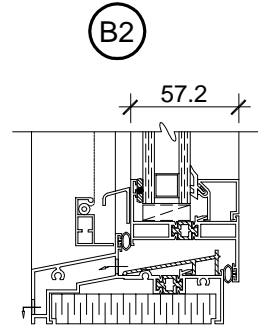
71-412
file 412DT



71-412
file 412ViT

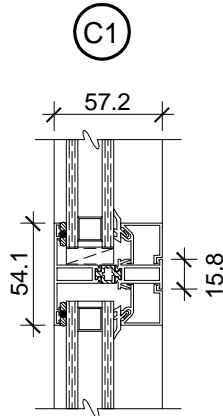


71-411
file 411DB

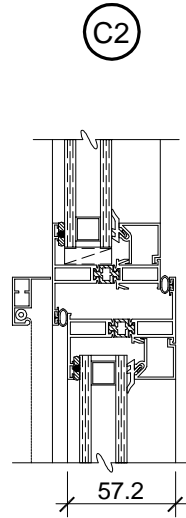


71-411
file 411ViB

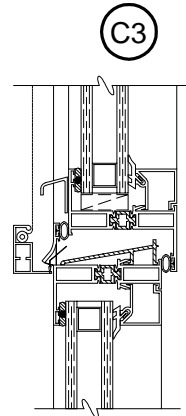
HORIZONTAL MULLION SECTIONS



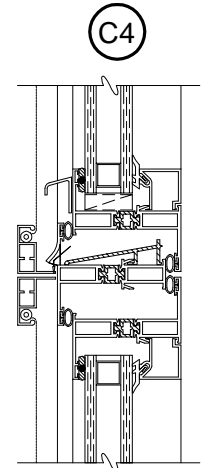
70-226
file 226DD



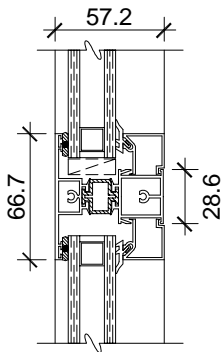
70-226
file 226DVi



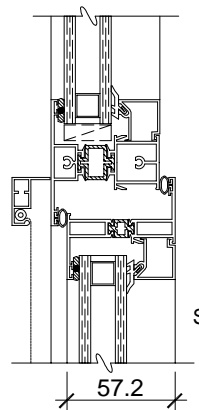
70-226
file 226ViD



70-226
file 226ViVi



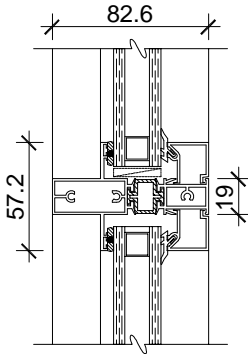
See note 1
70-229
file 229DD



See note 1
70-229
file 229DVi

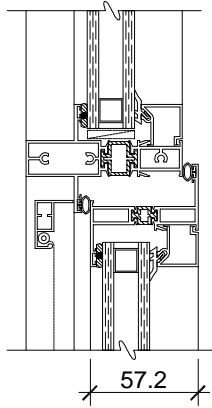
HORIZONTAL MULLION SECTIONS

C1



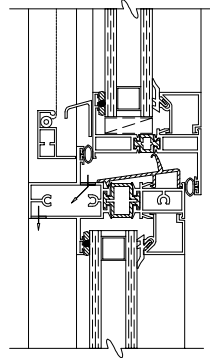
71-428
file 428DD

C2



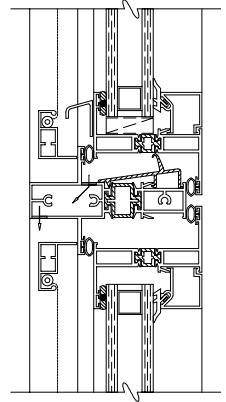
71-428
file 428DVi

C3



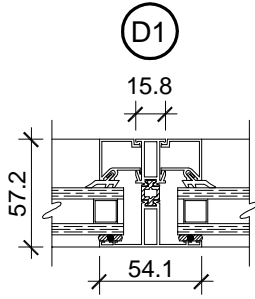
71-428
file 428ViD

C4

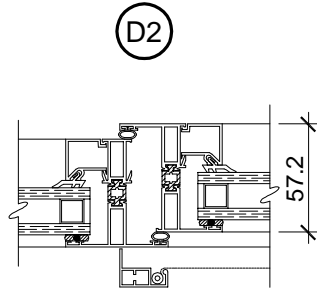


71-428
file 428ViVi

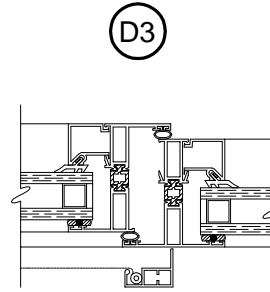
VERTICAL MULLION SECTIONS



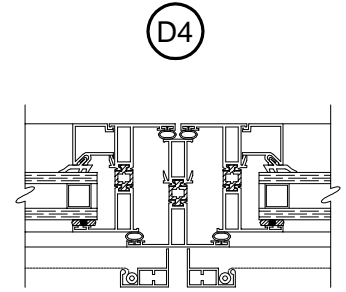
70-226
file 226DDH



70-226
file 226ViH

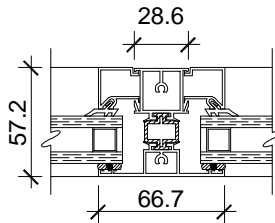


70-226
file 226ViDH

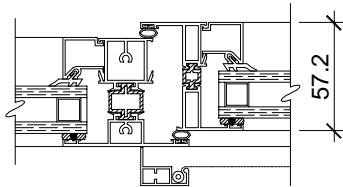


See note 2

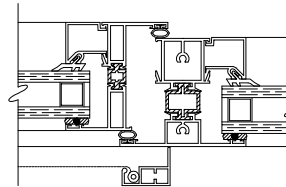
70-226
file 226ViViH



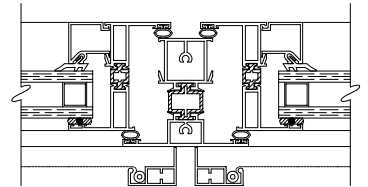
70-229
file 229DDH



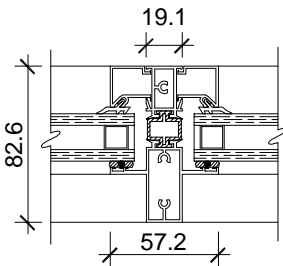
70-229
file 229DViH



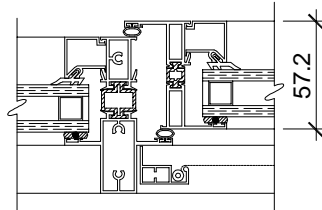
70-229
file 229ViDH



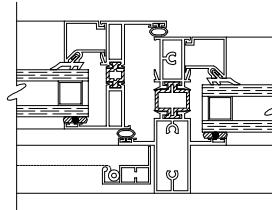
70-229
file 229ViViH



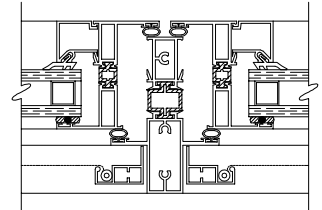
71-428
file 428DDH



71-428
file 428DViH

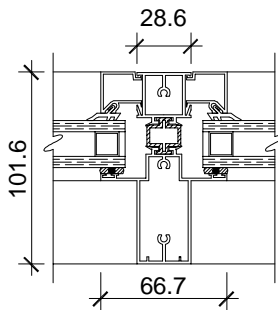


71-428
file 428ViDH

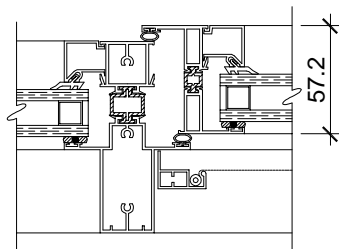


See note 2

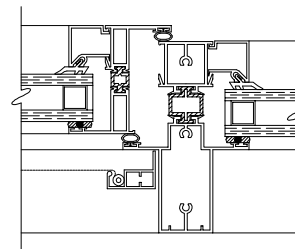
71-428
file 428ViViH



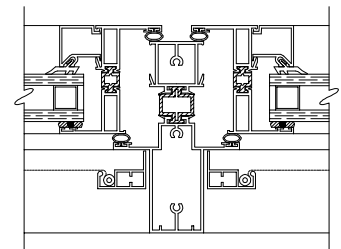
71-429
file 429DDH



71-429
file 429DViH



71-429
file 429ViDH



71-429
file 429ViViH