



FIXED INSULATED WINDOW AND  
OPENING IN 1700 SERIES (57mm)..... PAGE 2

-DETAILS FOR HEAD AND SILL ..... PAGE 3

-DETAILS FOR HORIZONTAL MULLION ..... PAGE 3

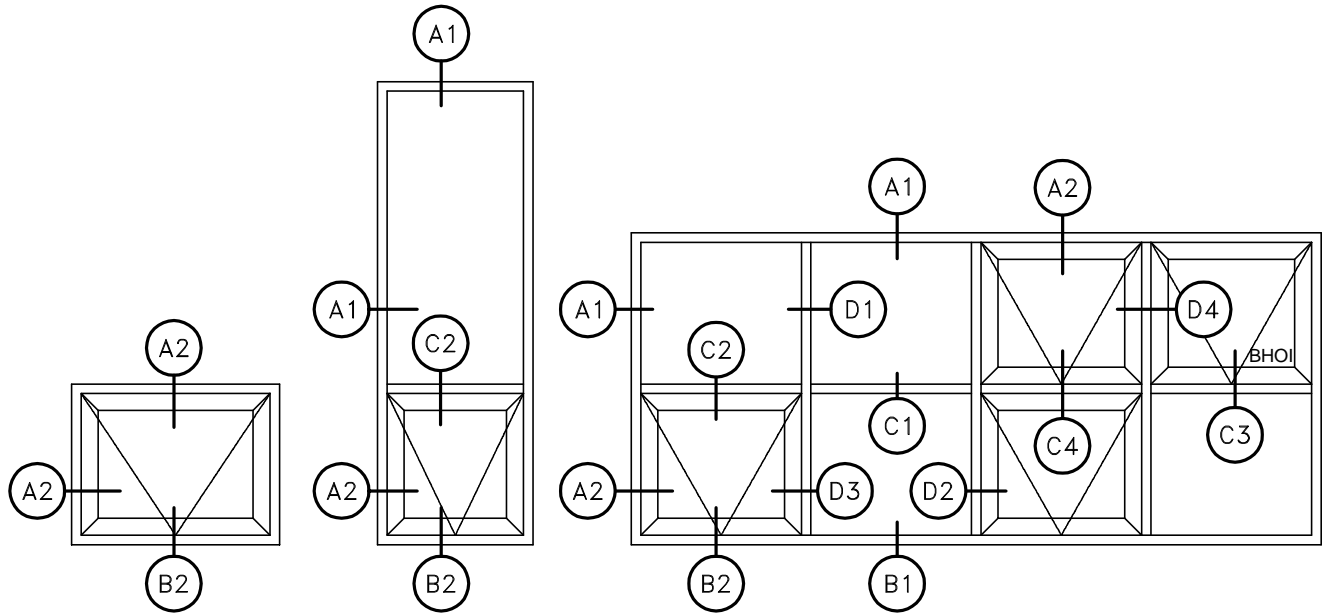
-DETAILS FOR VERTICAL MULLIONS ..... PAGE 4

FIXED INSULATED WINDOW AND  
OPENING IN 1740 SERIES (102mm)..... PAGE 5

-DETAILS FOR HEAD AND SILL ..... PAGE 6

-DETAILS FOR HORIZONTAL MULLIONS ..... PAGE 6-7

-DETAILS FOR VERTICAL MULLIONS ..... PAGE 8



DETAILS FOR BOTTOM HUNG OPENING IN VENTS (BHOI) ALSO APPLY TO CASEMENTS VENTS OPENING IN (SHOI).

## LEGENDE

- BHOI: BOTTOM HUNG OPENING IN.
- SHOI: SIDE HUNG OPENING IN.
- : FILE NAME FOR AUTOCAD

## GENERAL NOTE

- DETAILS ARE SUBJECT TO CHANGE WITHOUT NOTICE.
- DIMENSIONS WILL NOT SHOW ON THESE FILES.
- PLEASE ADD THEM TO YOUR DRAWING ACCORDINGLY.

### NOTE 1:

BIGGER HORIZONTAL MULLION, 70-229, FOR WIDER MODULES, AVAILABLE ONLY WITHOUT ANY SASH IN THE ABOVE LIGHT.

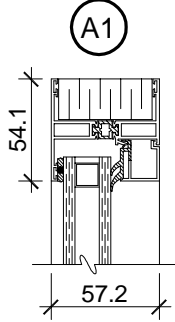
### NOTE 2:

VERTICAL MULLIONS 70-226 AND 71-428, WITH SASH ON BOTH SIDES, FOR BHOI ONLY. IF SHOI, POSSIBLE ONLY WHEN NO HINGE IS REQUIRED ON THIS SAME MULLION. ELSE USE FILE 229ViViH OR 429ViViH.

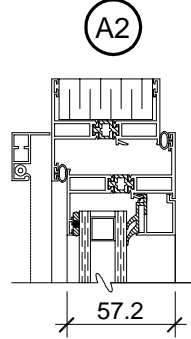
## "MAXSEAL" SYSTEM

"MAXSEAL" SYSTEM IS A NEW TYPE OF GLASS STOP ALLOWING BETTER PERFORMANCES BY MEANS OF THE OBTAINED WITH A HEAL BEAD. PATENT PENDING.

## HEAD AND JAMB SECTION

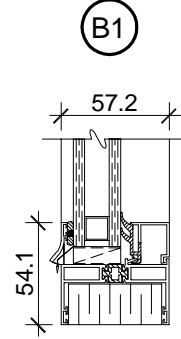


**70-225**  
file M225DT

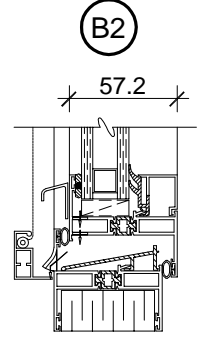


**70-225**  
file M225ViT

## SILL SECTION

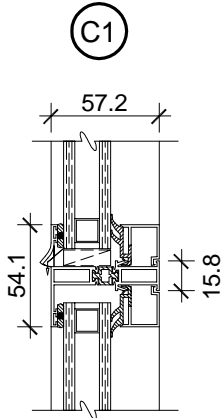


**70-225**  
file M225DB

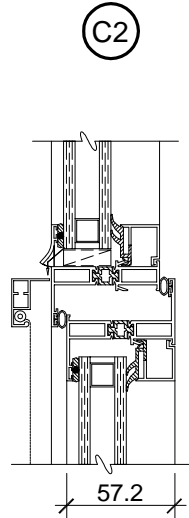


**70-225**  
file M225ViB

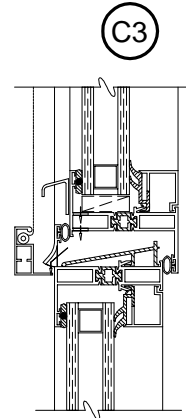
## HORIZONTAL MULLION SECTIONS



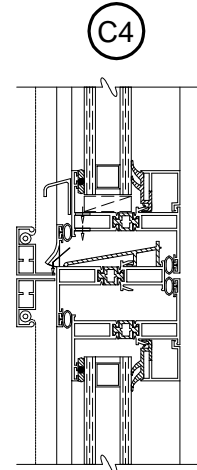
**70-226**  
file M226DD



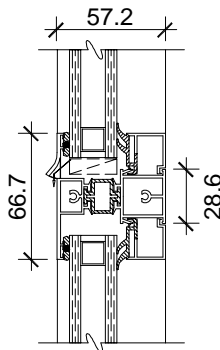
**70-226**  
file M226DVi



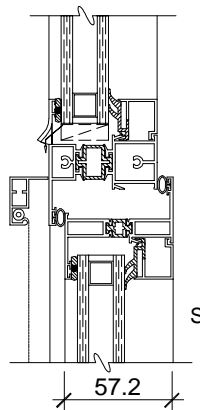
**70-226**  
file M226ViD



**70-226**  
file M226ViI



**70-229**  
file M229DD



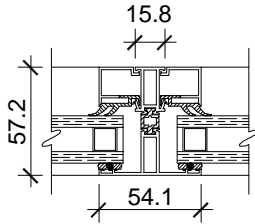
**70-229**  
file M229DVi

See note 1

See note 1

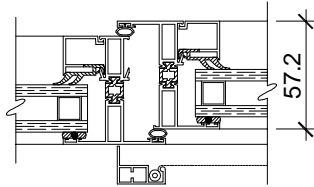
## VERTICAL MULLION SECTIONS

D1



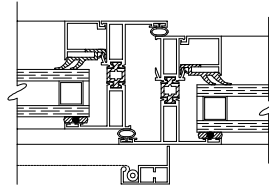
**70-226**  
file M226DDH

D2



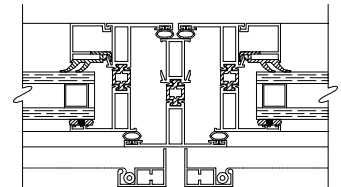
**70-226**  
file M226DVih

D3



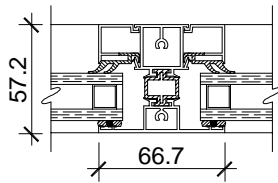
**70-226**  
file M226ViDH

D4

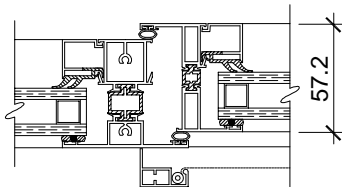


See note 2

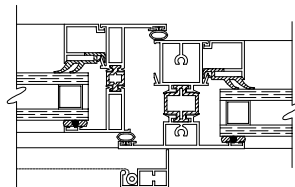
**70-226**  
file M226ViViH



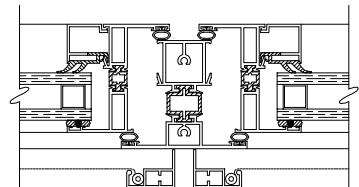
**70-229**  
file M229DDH



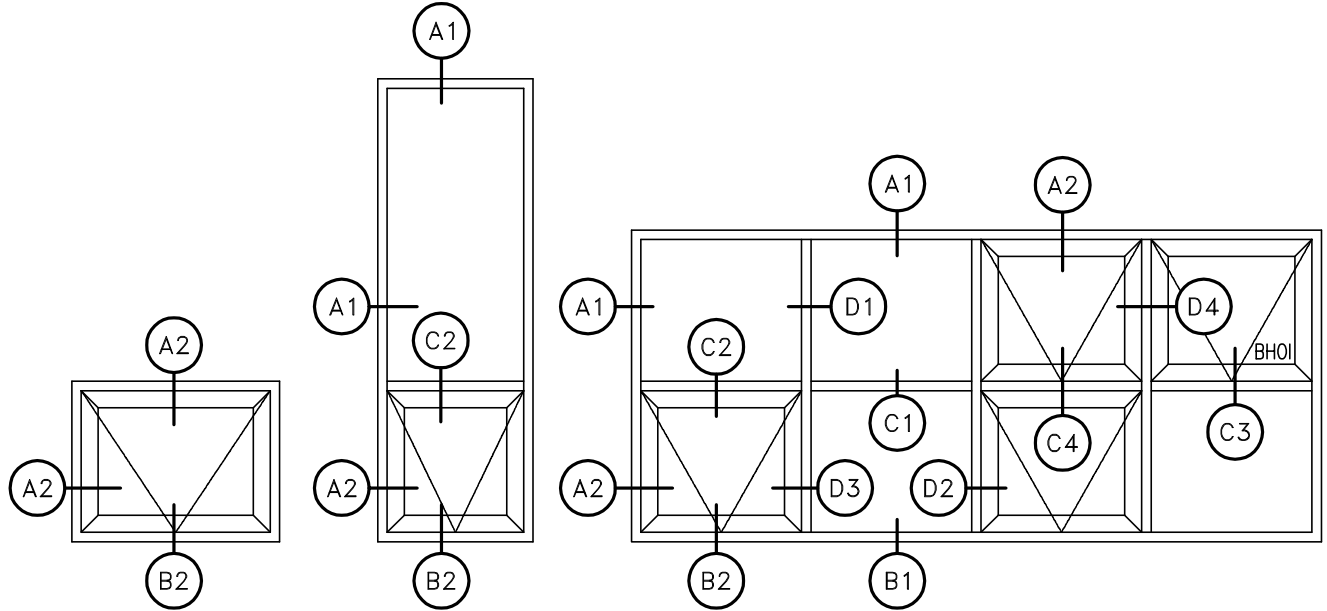
**70-229**  
file M229DVih



**70-229**  
file M229ViDH



**70-229**  
file M229ViViH



DETAILS FOR BOTTOM HUNG OPENING  
IN VENTS (BHOI) ALSO APPLY TO  
CASEMENTS VENTS OPENING IN (SHOI).

## LEGENDE

-BHOI: BOTTOM HUNG OPENING IN.

-SHOI: SIDE HUNG OPENING IN.

□ : FILE NAME FOR AUTOCAD

## GENERAL NOTE

-DETAILS ARE SUBJECT TO CHANGE WITHOUT NOTICE.

-DIMENSIONS WILL NOT SHOW ON THESE FILES.

PLEASE ADD THEM TO YOUR DRAWING ACCORDINGLY.

## NOTE 1:

BIGGER HORIZONTAL MULLION, 70-229, FOR WIDER MODULES,  
AVAILABLE ONLY WITHOUT ANY SASH IN THE ABOVE LIGHT.

## NOTE 2:

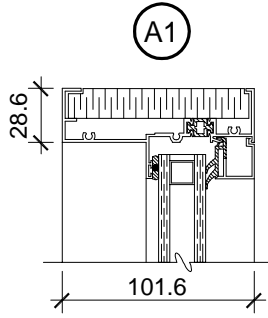
VERTICAL MULLIONS 70-226 AND 71-428, WITH SASH ON BOTH SIDES, FOR  
BHOI ONLY. IF SHOI, POSSIBLE ONLY WHEN NO HINGE IS REQUIRED ON  
THIS SAME MULLION. ELSE USE FILE 229ViViH OR 429ViViH.

## "MAXSEAL" SYSTEM

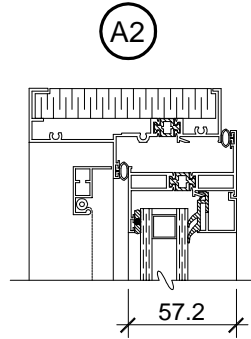
"MAXSEAL" SYSTEM IS A NEW TYPE OF GLASS STOP  
ALLOWING BETTER PERFORMANCES BY MEANS OF THE  
OBTAINED WITH A HEAL BEAD. PATENT PENDING.

## HEAD AND JAMB SECTION

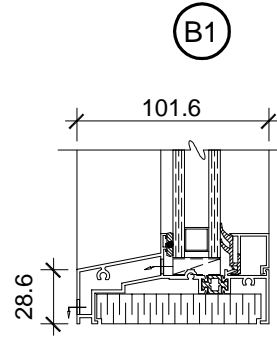
## SILL SECTION



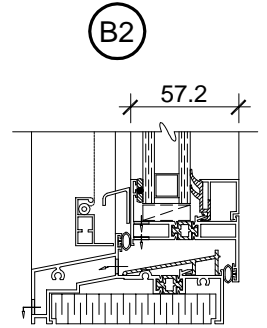
**71-412**  
file M412DT



**71-412**  
file M412ViT

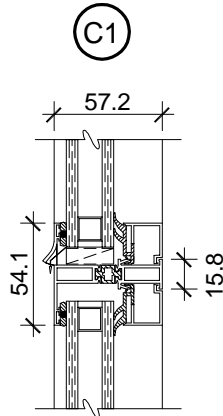


**71-411**  
file M411DB

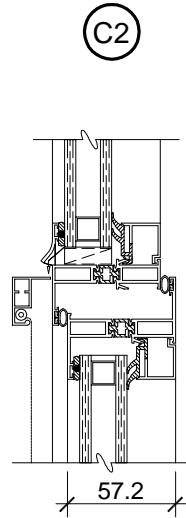


**71-411**  
file M411ViB

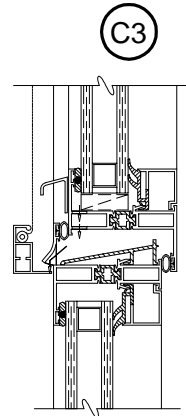
## HORIZONTAL MULLION SECTIONS



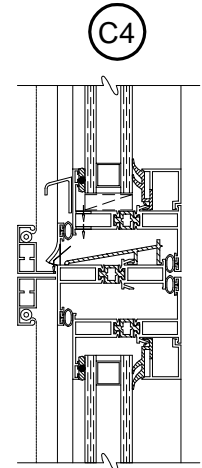
**70-226**  
file M226DD



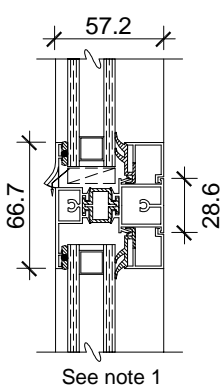
**70-226**  
file M226DVl



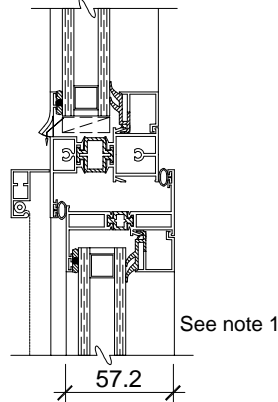
**70-226**  
file M226ViD



**70-226**  
file M226ViVi



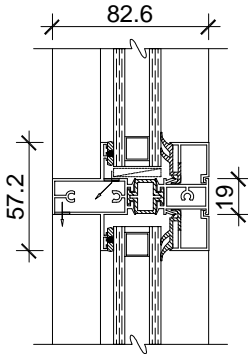
**70-229**  
file M229DD



**70-229**  
file M229DVl

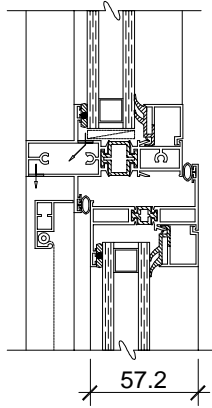
## HORIZONTAL MULLION SECTIONS

C1



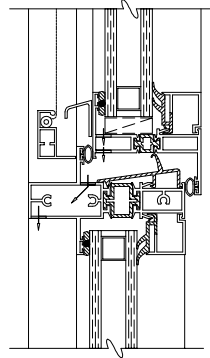
**71-428**  
file M428DD

C2



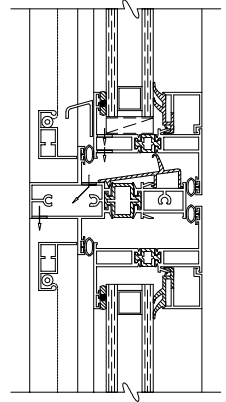
**71-428**  
file M428DVi

C3



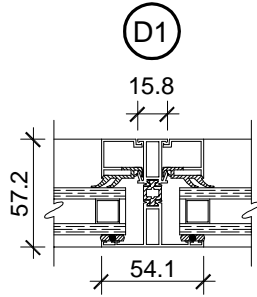
**71-428**  
file M428ViD

C4

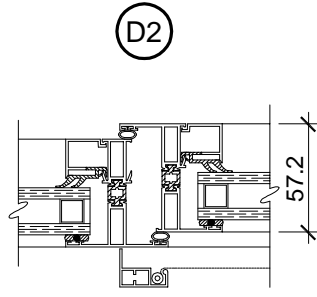


**71-428**  
file M428ViVi

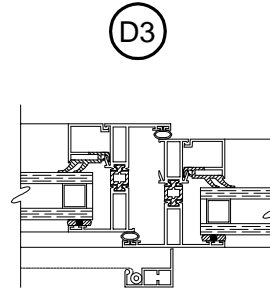
## VERTICAL MULLION SECTIONS



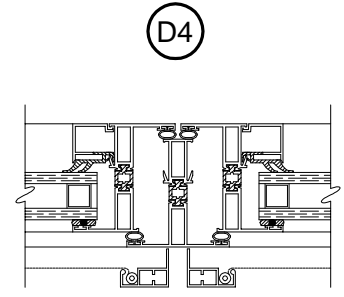
**70-226**  
file M226DDH



**70-226**  
file M226ViH

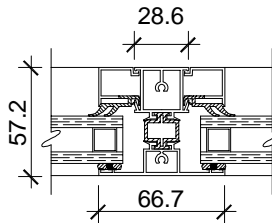


**70-226**  
file M226ViDH

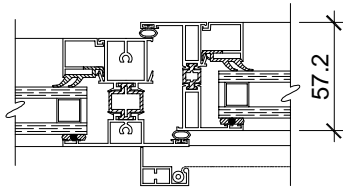


See note 2

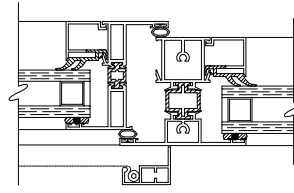
**70-226**  
file M226ViViH



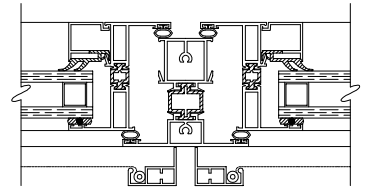
**70-229**  
file M229DDH



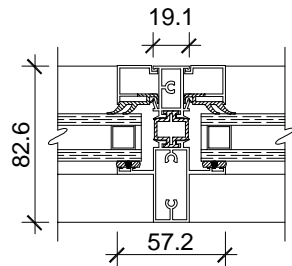
**70-229**  
file M229DViH



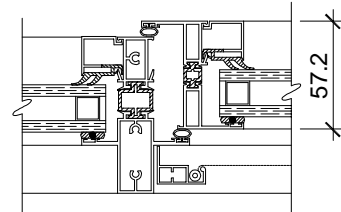
**70-229**  
file M229ViDH



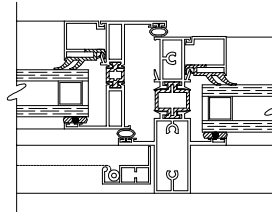
**70-229**  
file M229ViViH



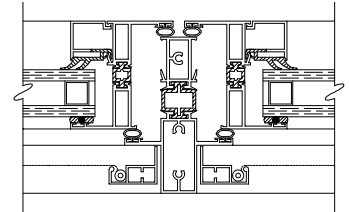
**71-428**  
file M428DDH



**71-428**  
file M428DViH

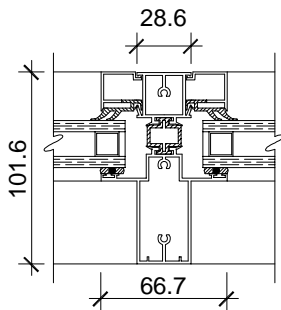


**71-428**  
file M428ViDH

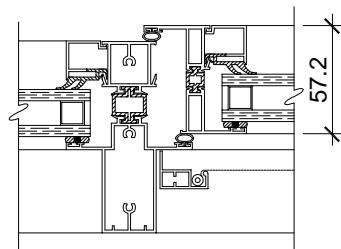


See note 2

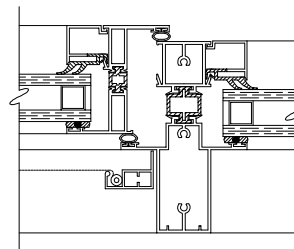
**71-428**  
file M428ViViH



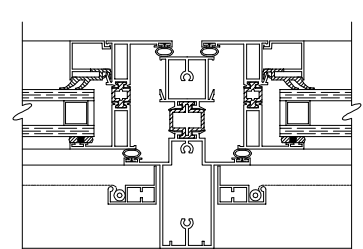
**71-429**  
file M429DDH



**71-429**  
file M429DViH



**71-429**  
file M429ViDH



**71-429**  
file M429ViViH